

FILTAIR® SWX Series



Quick Specs

Industrial Applications

Schools and Training Facilities
Manufacturing and Fabrication
Fixed Welding Cells/Stations

Processes

Stick (SMAW)
Flux-Cored (FCAW)
MIG (GMAW)
TIG (GTAW)

Filter Media 490 ft.² (45.52 m²)

Accu-Rated™ Airflow 875 CFM (413 L/sec.)

Sound Level Approximately 75 dBA at
5 ft. (1.5 m)

Motor Specifications 1 HP, 3450 RPM

Input Power 115 V, 1-Phase, 60 Hz
at approximately 11.9 A

Cabinet Dimensions
H: SWX-D: 29 in. (737 mm)
H: SWX-S: 33 in. (838 mm)
W: 27.25 in. (692 mm)
D: 33 in. (838 mm)

Cabinet Net Weight
SWX-D: 130 lb. (59 kg)
SWX-S: 195 lb. (88 kg)

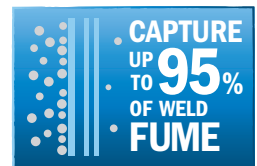
Extraction Arm Telescoping:
Standard: 8-in. (203 mm) diameter
3–4.5 ft. length
7-, 10-, or 12-ft. lengths
(2.1, 3 or 3.7 m)



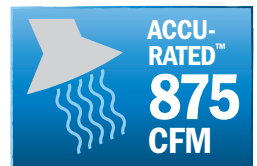
Wall- or column-mounted fume extraction systems designed specifically for welding.

The powerful high-volume system with a MERV 15 high-efficiency filter is ideal for fabrication shops, manufacturing and training centers. See page 2 for more information.

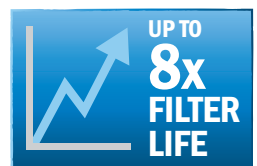
Have a certified industrial hygienist test the air in your facility to determine equipment requirements and ensure adequate protection from contaminants.



Standard high-efficiency filter designed to capture weld fume



Better suction for a cleaner work space



FitTek™ XL cleanable filters last longer



Now available with telescoping arm.

Disposable filter (SWX-D) model shown. Self-cleaning filter (SWX-S) model is also available.

See page 7 for optional dual-arm add-on packages.



Fume extractor is warranted for 1 year, parts and labor.



Miller Electric Mfg. Co.
An ITW Company
1635 West Spencer Street
P.O. Box 1079
Appleton, WI 54912-1079 USA

Equipment Sales US and Canada
Phone: 866-931-9730
FAX: 800-637-2315
International Phone: 920-735-4554
International FAX: 920-735-4125

MillerWelds.com
f t y



Specifications (Subject to change without notice.)

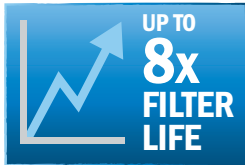
Filter Media	Accu-Rated™ Airflow	Extraction Arm Diameter	Sound Level	Motor	Power	Dimensions	Net Weight
490 ft. ² (45.52 m ²)	875 CFM (413 L/sec.)	8 in. (203 mm)	Approximately 74 dBA at 5 ft. (1.5 m)	1 HP, 3450 RPM	115 V, 1-Phase, 60 Hz at approximately 11.9 A	H: SWX-D: 29 in. (737 mm) H: SWX-S: 33 in. (838 mm) W: 27.25 in. (692 mm) D: 33 in. (838 mm)	SWX-D Cabinet: 130 lb. (59 kg) SWX-S Cabinet: 195 lb. (88 kg) Blower/Bracket: 95 lb. (43 kg)

System Benefits

SWX Filter Cabinet

Disposable and self-cleaning filter models available.

The disposable filter model works great for light duty and intermittent welding operations. Upgrade to self-cleaning models with high arc on time, extracting from heavy-fume processes, or when welding aluminum or galvanized materials. Self-cleaning models are also recommended for most dual-arm applications.



Self-cleaning model has additional features.

Designed to capture weld fume particles with a cleanable filter and safely deposit them in an integrated particle bin, the self-cleaning model provides unrivaled filtering performance.

One-minute cleaning cycle operates with a push of a button on the control panel.

Latches release a disposal drawer allowing it to slide out to provide easy and convenient access to empty out the collected particles.

Note: Compressed air required to operate cleaning mechanism.

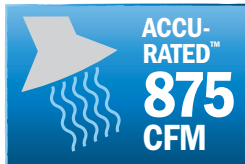


Disposable filter
(SWX-D) model



Self-cleaning filter
(SWX-S) model

Fume Extraction Blower



Class leading suction power.

High-performance fan generates 1200 CFM and creates an Accu-Rated minimum of 875 CFM extraction at the hood to better capture weld fumes and provide a cleaner environment.



Easy-to-operate, Pre-assembled Extraction Arms

Telescoping arms extend up to 4.5 feet and are ideal for smaller spaces.

Designed to fit small booth spaces used in training centers and educational booths. Telescopes from 3 to 4.5 feet with a wide range of motion to cover all positions.



Telescoping arm

Standard arms in three different sizes cover larger areas.

Designed to cover larger spaces, the standard extraction arms are available in 7-, 10-, and 12-foot versions. External brackets and adjustments allow air to pass through with less resistance giving you stronger CFM (airflow).

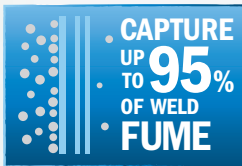


Standard arm

Cleaner Air with FilTek XL Filters

The FilTek XL filter's higher MERV rating means unrivaled filtering performance.

Filters are rated on a MERV scale, which measures filter efficiency based on particle count. MERV ratings range from 1–16, with 16 being the best at filtering small particles—such as those found in weld fumes. The vast majority of weld fumes are less than one micron in diameter, or roughly 1/100th the width of a human hair.



Filters in common air filtration systems often have MERV ratings between 7–11. FilTek XL filters are rated at class-leading MERV 15–16 to capture up to 95 percent of weld fume particulates.

Filter Media Performance Summary

FilTek XL filters have the highest efficiencies and lowest pressure drops to capture better, last longer, and lower operating costs.

See video at MillerWelds.com/filtair

MERV Comparison

Applicable Weld Fume MERV Rating Categories ¹	Particle Size Range Efficiency % ²		
	0.3 to 1 µm	1 to 3 µm	3 to 10 µm
10	Not Rated	50–65%	85%
11	Not Rated	65–80%	85%
12	Not Rated	80–90%	85%
13	<75%	90%	90%
14	75–85%	90%	90%
15 Miller® FilTek XL	85–95%	90%	90%
16 Miller® FilTek XL	95%	90%	90%
Percentage of Weld Fume Particle Size ³	75–95%	15%	10%

¹American Society of Heating, Refrigeration and Air Conditioning Engineers (ASHRAE) 52.2

²National Air Filtration Association (NAFA) Guide

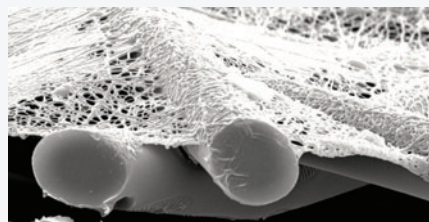
³Jenkins, Pierce, Edgar, Particle Size Distribution of GMAW and FCAW

Filter Media Type	Weld Fume Capture Efficiency	Pressure Drop	Relative Cost
Cellulose	Very Low	Low	\$
Cellulose Blend	Low	Moderate	\$
Spunbond Polyester	Moderate/high	High	\$\$\$
Meltblown Composite	High	High	\$\$
Miller FilTek XL	High	Low	\$\$

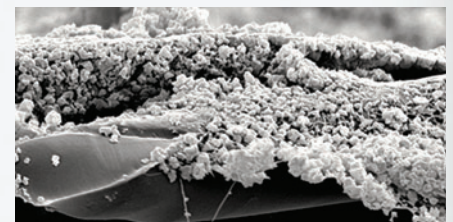
FilTek XL filters provide high efficiencies and low operating pressure to out-filter, outperform, and outlast all the rest.

Not Just Filters – FilTek XL Filters

The FilTek XL filter media design results in extended filter life, higher efficiency and stronger suction, resulting in a cleaner work space and improved weld fume capture. Filter media from FilTek XL high-volume filters are made up of a durable substrate with an engineered fiber designed to capture even the smallest of weld fume particles, while maintaining the highest level of efficiency.



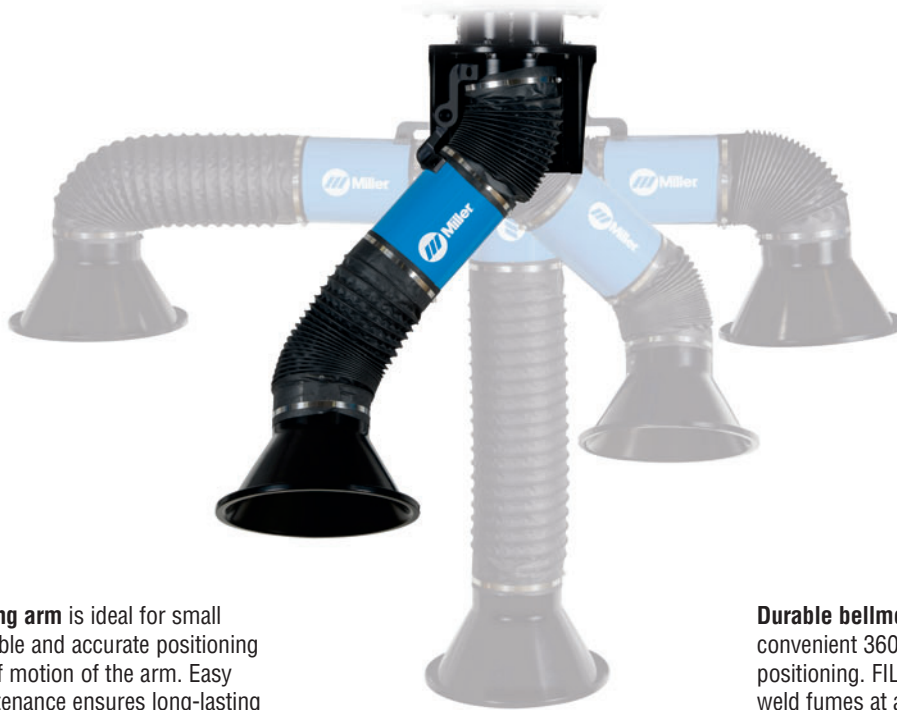
Clean FilTek XL media



Surface loaded FilTek XL media (substrate still clean)

Telescoping Extraction Arm

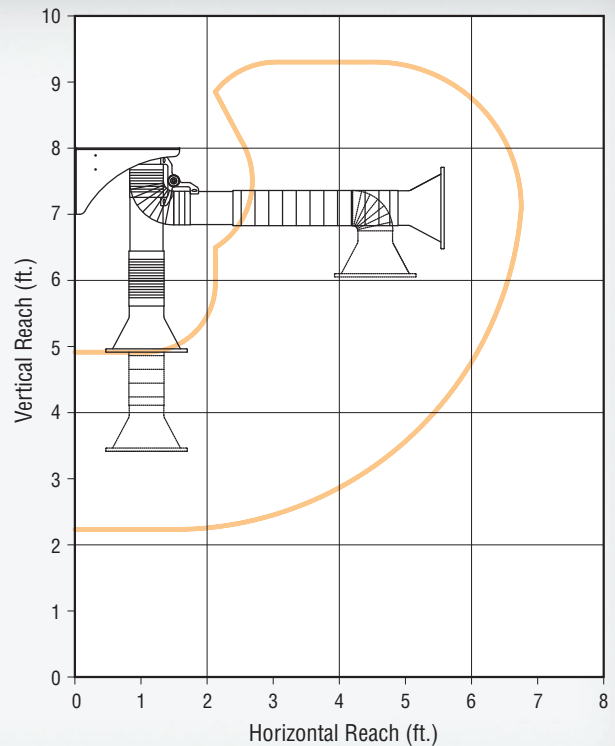
Pre-assembled arms for easy setup.



Easy-to-use telescoping arm is ideal for small spaces and offers reliable and accurate positioning across the full range of motion of the arm. Easy adjustments and maintenance ensures long-lasting operation. Pre-assembled telescoping arms can extend from 3 to 4.5 feet.

Durable bellmouth-shaped hood features a convenient 360 degree rotation for unlimited positioning. FILTAIR's extraction hood captures weld fumes at a greater distance from the source than other hood designs. This also means less hood adjustments for longer welds.

Telescoping Arm Coverage Area



Standard Extraction Arm

Pre-assembled arms for easy setup.



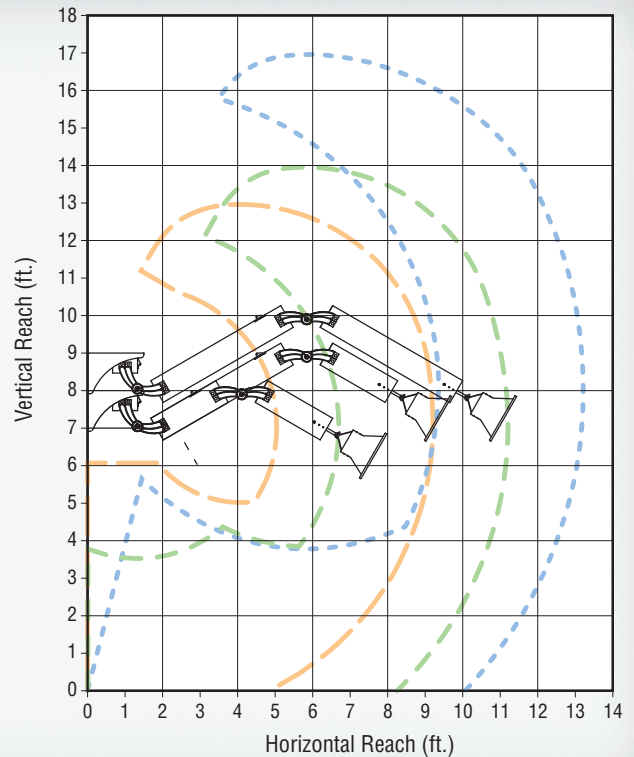
Easy-to-operate standard arm with external adjustments so air can pass through with less airflow resistance, giving you stronger CFM (airflow). It offers reliable and accurate positioning across the full range of motion of the arm, as well as easy adjustment and maintenance to ensure long-lasting operation. Pre-assembled extraction arms are available in 7-, 10- or 12-foot lengths.

Durable bellmouth-shaped hood features a convenient 360 degree rotation for unlimited positioning. FILTAIR's extraction hood captures weld fumes at a greater distance from the source than other hood designs. This also means less hood adjustments for longer welds.

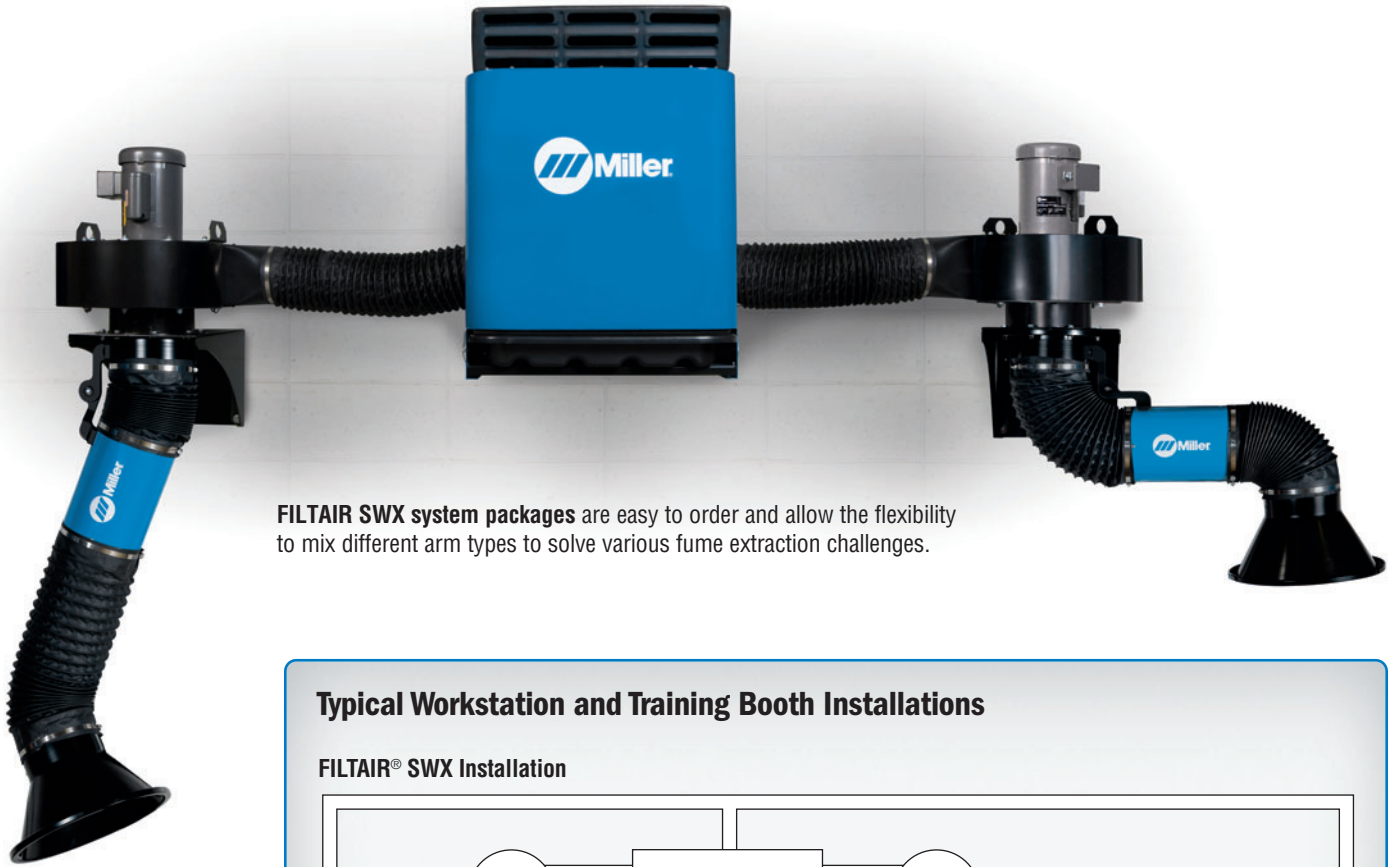
Standard Arm Coverage Area



- 7-ft. Extraction Arm
Min. ceiling height:
12.33-ft. (3.8 m)
- 10-ft. Extraction Arm
Min. ceiling height:
13.33-ft. (4.1 m)
- 12-ft. Extraction Arm
Min. ceiling height:
14.33-ft. (4.4 m)



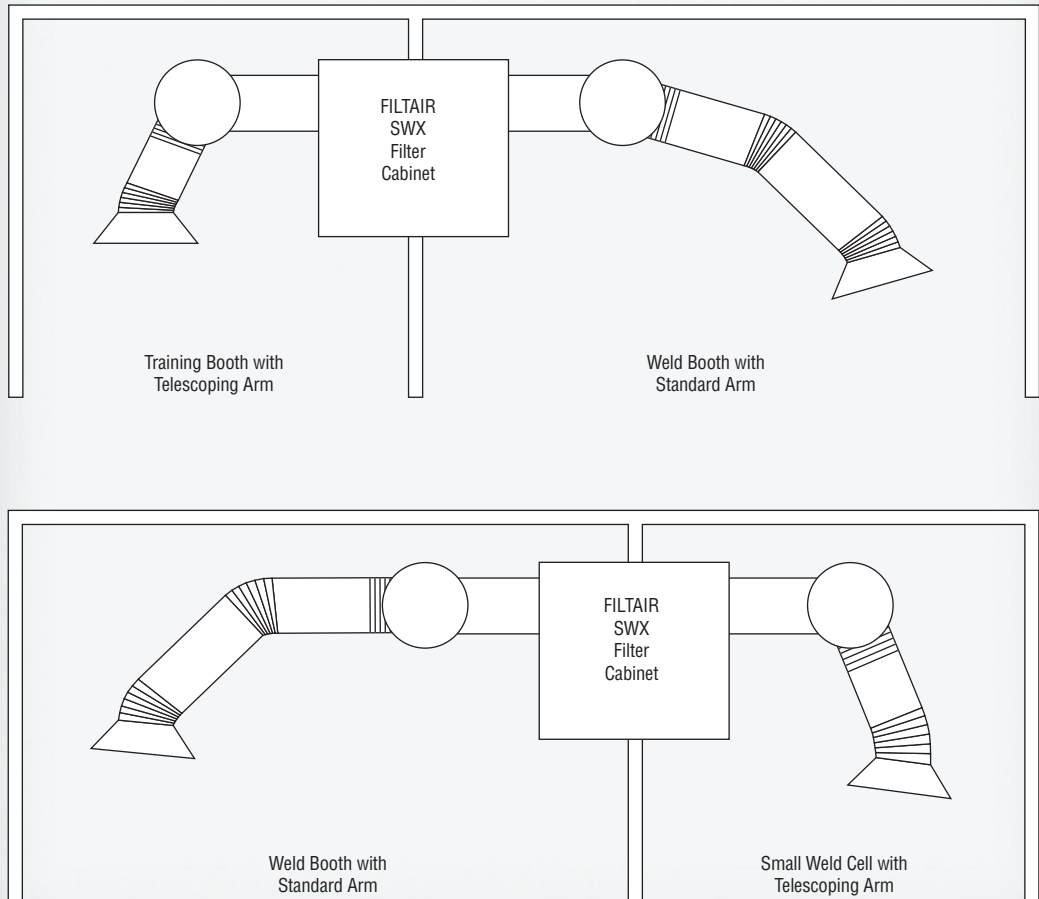
Workstations and Training Booths



FILTAIR SWX system packages are easy to order and allow the flexibility to mix different arm types to solve various fume extraction challenges.

Typical Workstation and Training Booth Installations

FILTAIR® SWX Installation



Packages

Telescoping Arm

Telescoping Arm packages include:

- SWX filter cabinet (choose disposable filter or self-cleaning model)
- High-efficiency filter
- 115 VAC cleaning control box (self-cleaning model only)
- 115 VAC blower
- 115 VAC on/off control box
- Mounting bracket for blower/arm
- Flexible duct (7 x 37 in.)
- 8-in. telescoping arm (3–4.5 ft.)

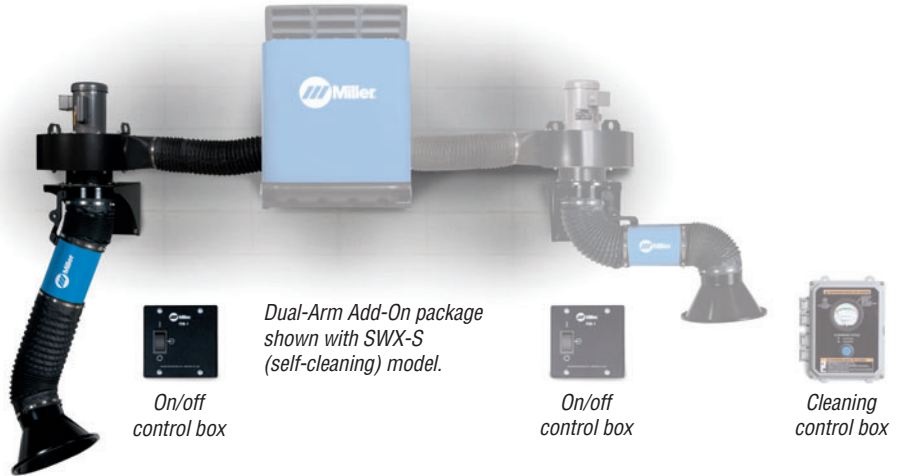
Note: 115 VAC wiring not included.



Telescoping Dual-Arm Add-On package includes:

- 115 VAC blower
- 115 VAC on/off control box
- Mounting bracket for blower/arm
- Flexible duct (7 x 37 in.)
- Backdraft dampers
- 8-in. telescoping arm (3–4.5 ft.)

Note: 115 VAC wiring not included.



Standard Arm

Standard Arm package includes:

- SWX filter cabinet (choose disposable filter or self-cleaning model)
- High-efficiency filter
- 115 VAC cleaning control box (self-cleaning model only)
- 115 VAC blower
- 115 VAC on/off control box
- Mounting bracket for blower/arm
- Flexible duct (7 x 37 in.)
- 8-in. standard arm (choice of 7, 10, or 12 ft.)

Note: 115 VAC wiring not included.



Standard Dual-Arm Add-On package includes:

- 115 VAC blower
- 115 VAC on/off control box
- Mounting bracket for blower/arm
- Flexible duct (7 x 37 in.)
- Backdraft dampers
- 8-in. standard arm (choice of 7, 10, or 12 ft.)

Note: 115 VAC wiring not included.



Genuine Miller® Accessories



Replacement Filter
#300 539
 Disposable
#300 540
 Self-cleaning (shown)



SWX Hood Light with Arc Sensor
#300 763 Field
 The hood light with arc sensor illuminates the welding zone and enables the fume extractor to

start automatically when welding begins.

Ordering Information

Equipment and Options	Stock No.	Description	Qty.	Price
FILTAIR® SWX-D (Disposable Filter) Single-Arm Packages (Includes SWX-D cabinet, disposable filter, blower, on/off control box, mounting bracket, duct, and 8-in. arm. 115 VAC wiring NOT included.)	#951 619	With 3–4.5 ft. telescoping extraction arm		
	#951 513	With 7-ft. standard extraction arm		
	#951 514	With 10-ft. standard extraction arm		
	#951 515	With 12-ft. standard extraction arm		
FILTAIR® SWX-S (Self-Cleaning Filter) Single-Arm Packages (Includes SWX-S cabinet, self-cleaning control box and filter, blower, on/off control box, mounting bracket, duct, and 8-in. arm. 115 VAC wiring NOT included.)	#951 620	With 3–4.5 ft. telescoping extraction arm		
	#951 516	With 7-ft. standard extraction arm		
	#951 517	With 10-ft. standard extraction arm		
	#951 518	With 12-ft. standard extraction arm		
FILTAIR® SWX Dual-Arm Add-On Packages (Includes blower, on/off control box, mounting bracket, duct, backdraft dampers, and 8-in. arm. 115 VAC wiring NOT included.)	#951 621	With 3–4.5 ft. telescoping extraction arm		
	#951 519	With 7-ft. standard extraction arm		
	#951 520	With 10-ft. standard extraction arm		
	#951 521	With 12-ft. standard extraction arm		
Base Components				
SWX Cabinet (Includes filter and duct)	#300 599 #300 600	With disposable filter With self-cleaning control box and filter		
FEB-1 Fume Extraction Blower (Includes on/off control box and mounting bracket)	#300 691	1-horsepower (FEB-1)		
Telescoping Extraction Arm (Arm only)	#301 237	3–4.5 ft. length, 8-in. diameter		
Standard Extraction Arms (Arm only)	#300 980 #300 981 #300 982	SA-W807, 7-ft. length, 8-in. diameter		
		SA-W810, 10-ft. length, 8-in. diameter		
		SA-W812, 12-ft. length, 8-in. diameter		
Replacement Filters				
Disposable Filter	#300 539			
Self-Cleaning Filter	#300 540			
Accessories				
SWX Hood Light with Arc Sensor	#300 763	Field		

Date:

Total Quoted Price:

**Please call toll-free 855-FILTAIR (855-345-8247)
 for information on fume extraction solutions.**

Distributed by:

